

SCHEDULE T – TRANSPORTATION AND MAJOR ROADS MAPS

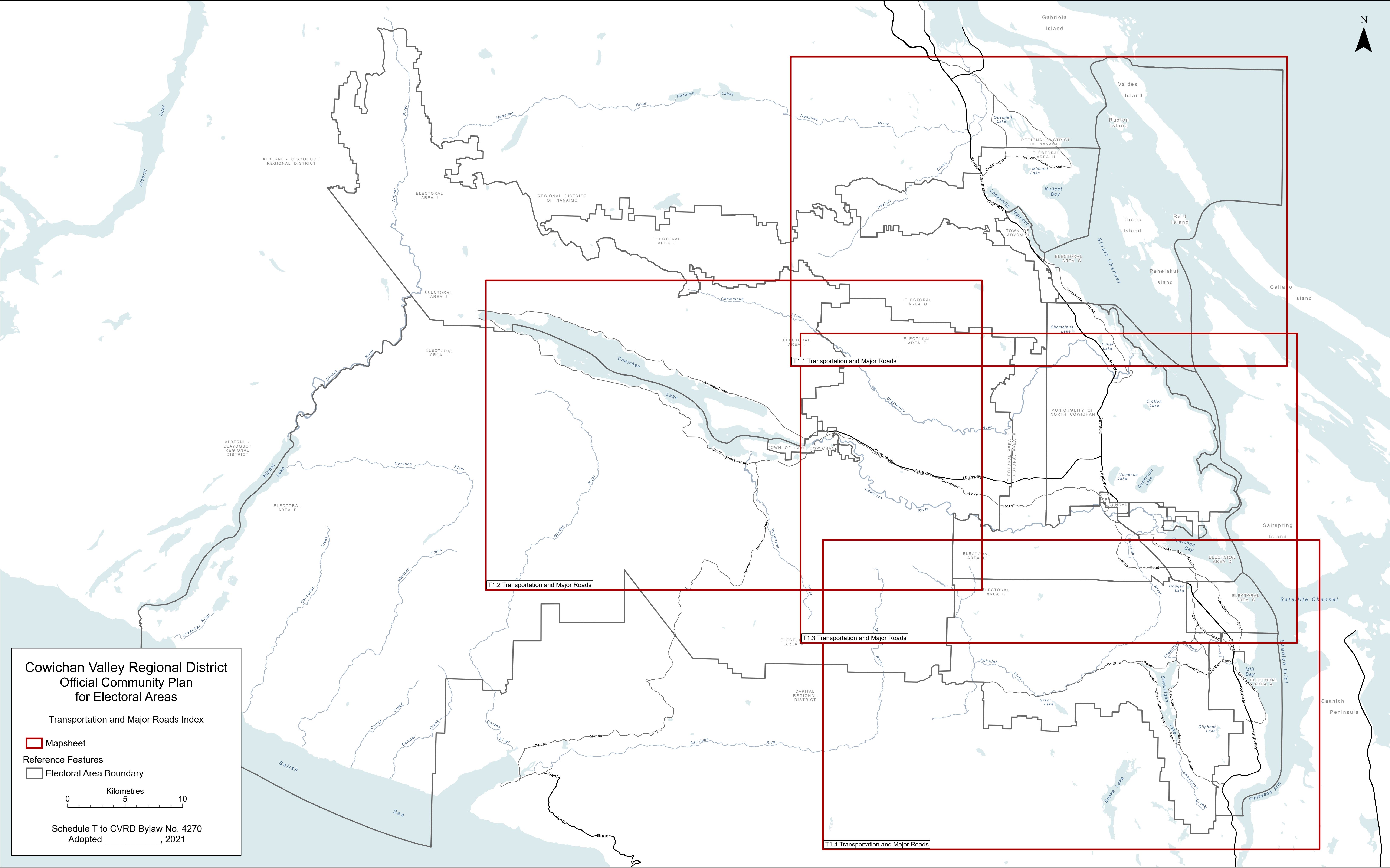
Table of Contents

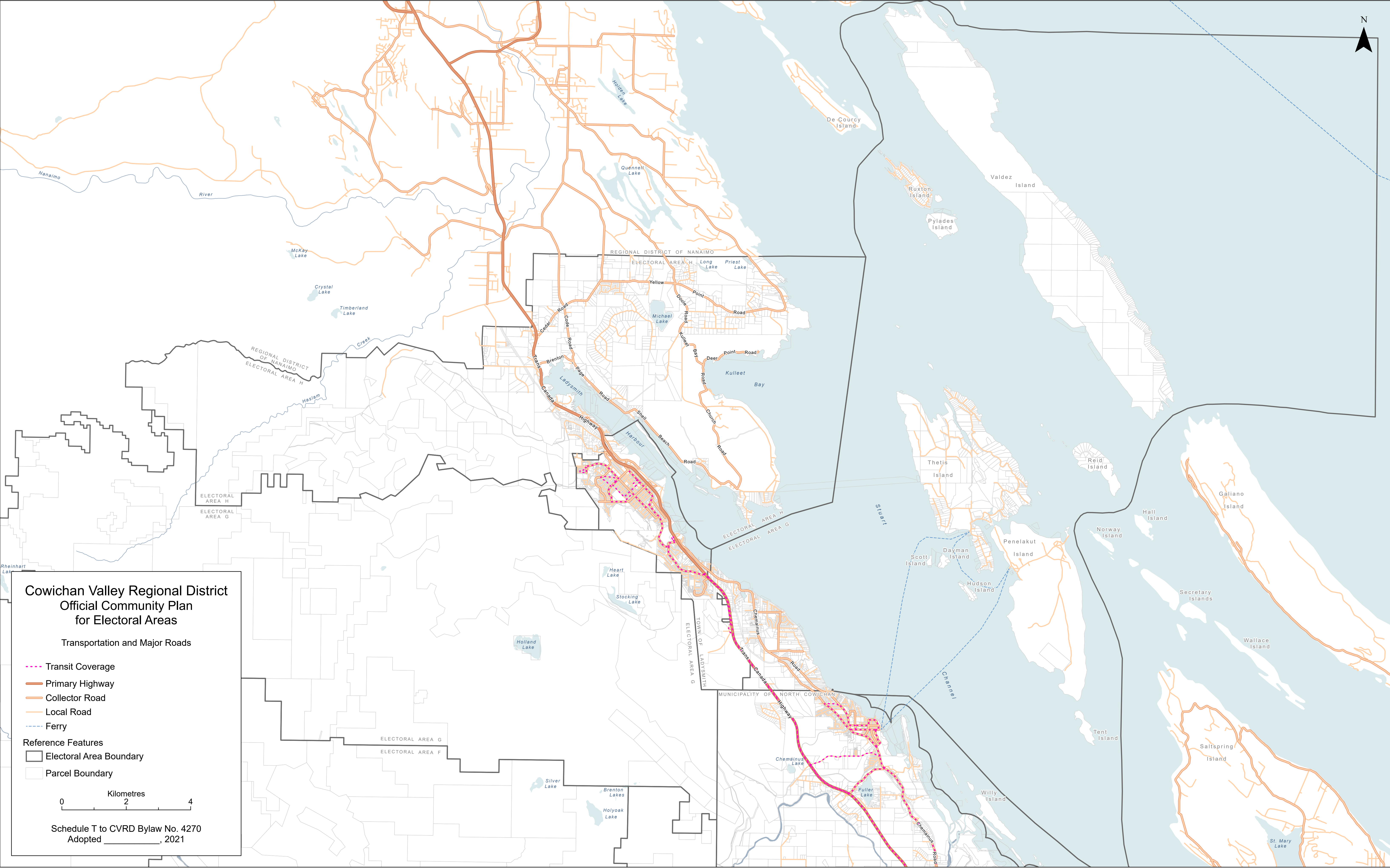
Introduction	3
T1 Transportation and Major Roads Index – Regional	4
T1.1 Transportation and Major Roads North – Regional	5
T1.2 Transportation and Major Roads West – Regional	6
T1.3 Transportation and Major Roads Central – Regional	7
T1.4 Transportation and Major Roads South – Regional	8
TA1 Transportation and Major Roads Index – Area A	9
TA1.1 Transportation and Major Roads North – Area A	10
TA1.2 Transportation and Major Roads South – Area A	11
TB1 Transportation and Major Roads Index – Area B	12
TB1.1 Transportation and Major Roads North – Area B	13
TB1.2 Transportation and Major Roads South – Area B	14
TC Transportation and Major Roads – Area C	15
TD1 Transportation, Major Roads, and Mobility Network Index – Area D	16
TD1.1 Transportation and Major Roads – Area D	17
TD1.2 Transportation and Mobility Network – Area D	18
TE1 Transportation and Major Roads Index – Area E	19
TE1.1 Transportation and Major Roads West – Area E	20
TE1.2 Transportation and Major Roads East – Area E	21
TF1 Transportation and Major Roads Index – Area F	22
TF1.1 Transportation and Major Roads Central – Area F	23
TF1.2 Transportation and Major Roads East – Area F	24
TG Transportation and Major Roads – Area G (excluding the Gulf Islands)	25
TH Transportation and Major Roads – Area H	26
TI1 Transportation and Major Roads Index – Area I	27
TI1.1 Transportation and Major Roads West – Area I	28
TI1.2 Transportation and Major Roads East – Area I	29

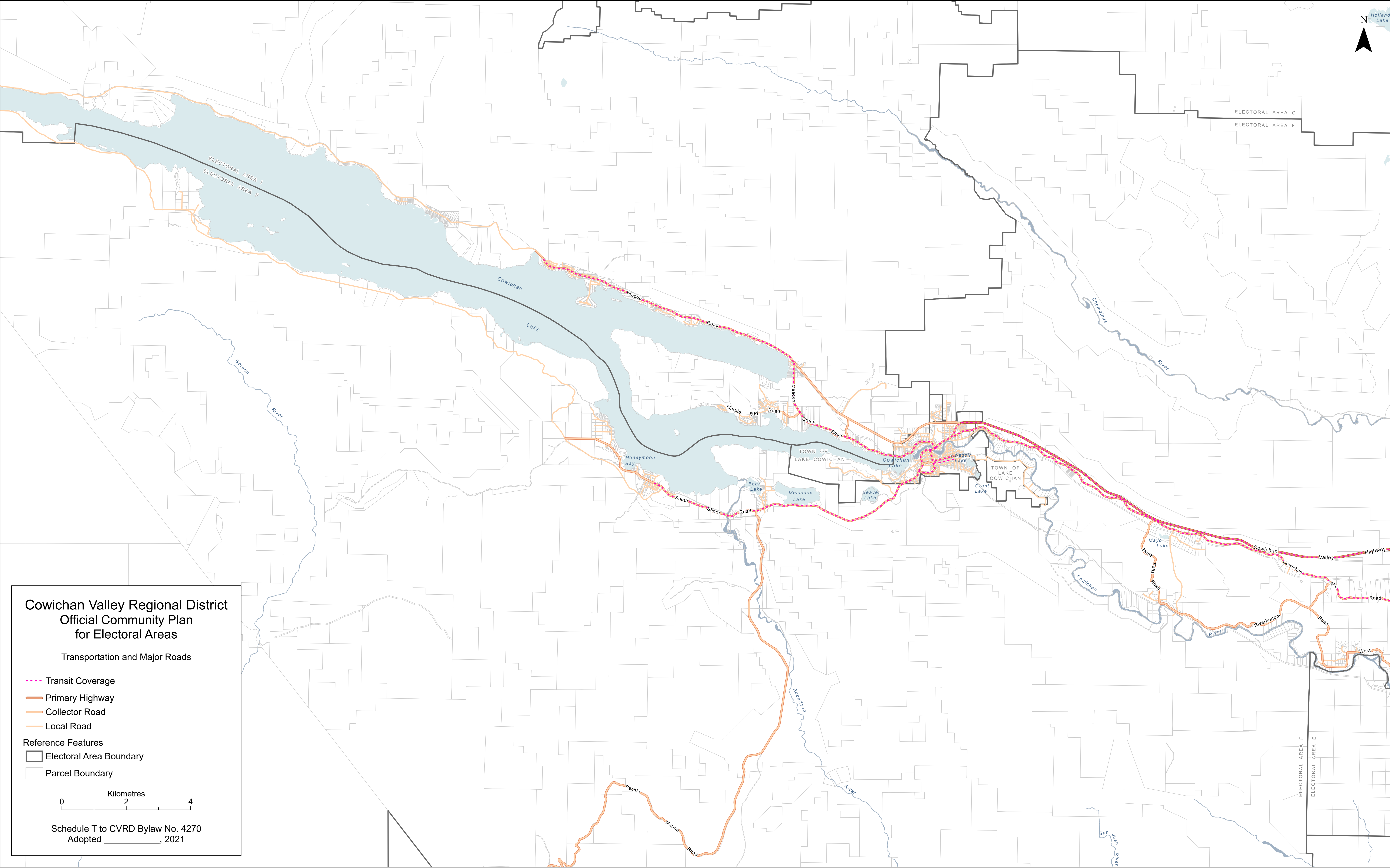
Introduction

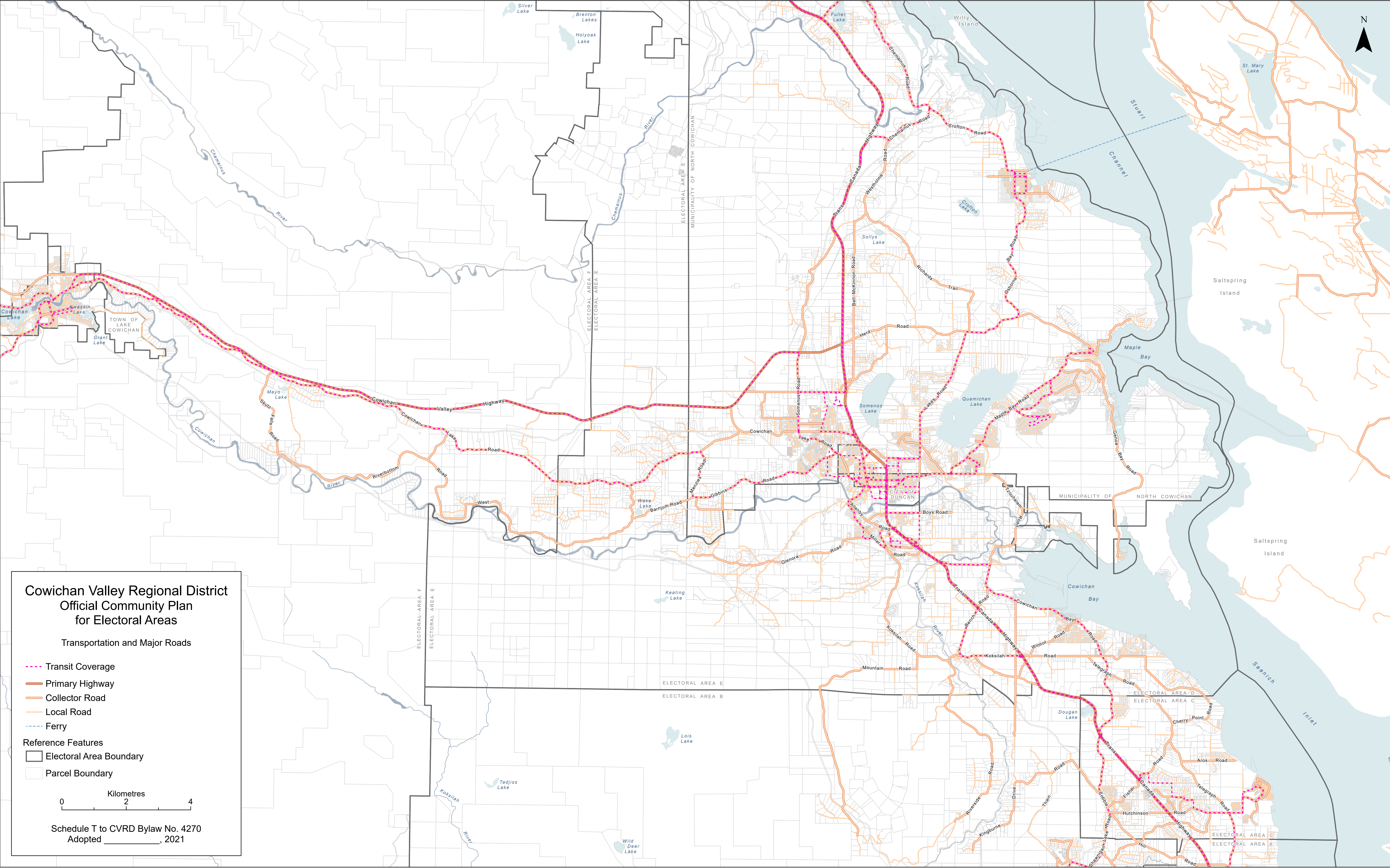
Schedule T contains regional and local area plan maps identifying Transportation and Major Roads in the Cowichan Valley Regional District. The map naming conventions indicate the Schedule letter, plan number, map number and sub-designation as follows.

Map Identification Key				
Map name and number	Schedule	Local area plan / DPA number (if applicable)	Map number	Map sub- designation
T1 Transportation and Major Roads Index – Regional	T		1	
T1.1 Transportation and Major Roads North – Regional	T		1	1
TA1 Transportation and Major Roads Index – Area A	T	A	1	
TA1.1 Transportation and Major Roads North – Area A	T	A	1	1









**Cowichan Valley Regional District
Official Community Plan
for Electoral Areas**

Transportation and Major Roads

- Transit Coverage
- Primary Highway
- Collector Road
- Local Road
- Ferry

Reference Features

- Electoral Area Boundary
- Parcel Boundary

0 2 4
Kilometres

Schedule T to CVRD Bylaw No. 4270
Adopted _____, 2021

